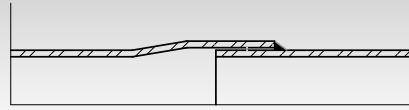
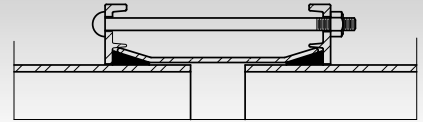


COMMON PIPE JOINTS

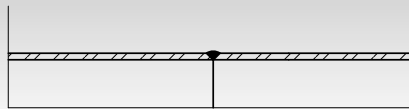
**WELDED LAP JOINT
(Bell & Spigot)**



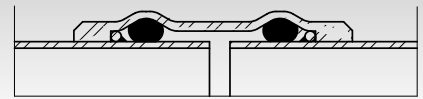
**MECHANICAL JOINT
(Sleeve-Type Coupling)**



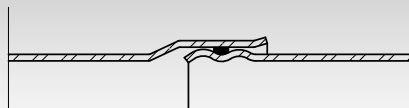
BUTT-WELD JOINT



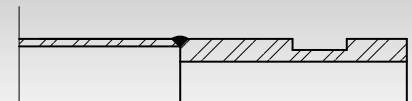
**MECHANICAL JOINT
(Depend-O-Lok Coupling)**



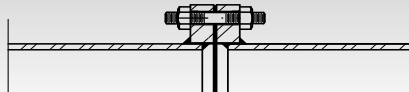
**"O" RING GASKET JOINT
(Bell & Spigot Rolled Groove)**



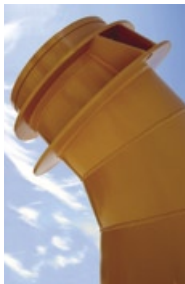
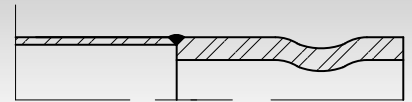
**MECHANICAL JOINT
(Cut-Groove Victaulic End)**



FLANGED JOINT



**MECHANICAL JOINT
(Rolled-Groove Victaulic End)**



**MECHANICAL JOINT
(Type-D Shoulder Victaulic End)**

